

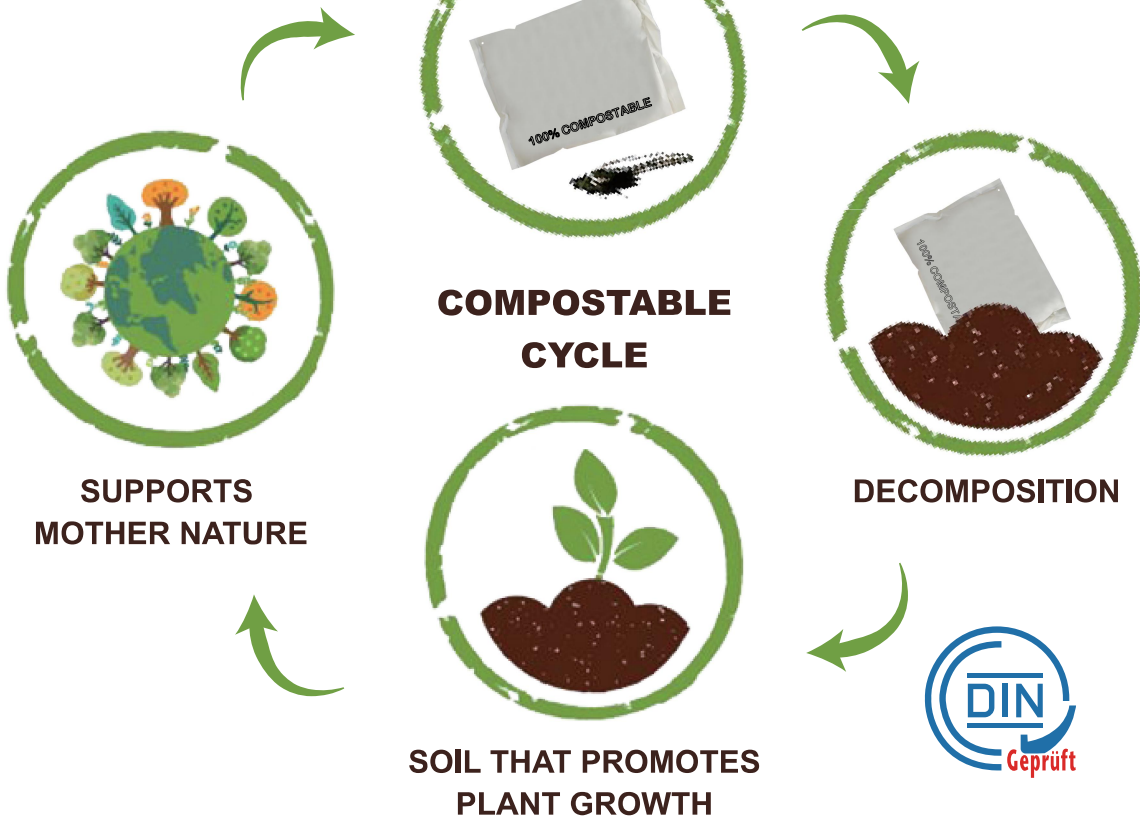


## 100% Compostable Pre-Opened Bags

Made from cornstarch and PBAT, a bio-based polymer.



COMPOSTABLE  
PACKAGING



week 1

week 2

week 3

week 4

week 5

week 6

week 7



Applications



Food



Apparel &  
Accessories



Medical



Crafts



Automotive



Electronics



Hardware &  
Fasteners



Other